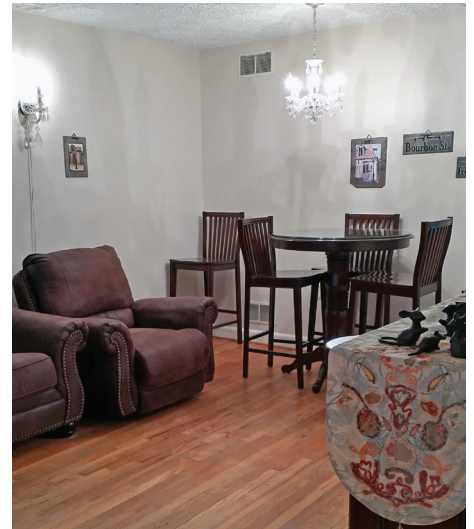


Winter Hill Condominium

120 W. Annandale Road, Falls Church, VA 22046

Sales Price: Starting at \$310,000 (DEPENDENT ON HOUSEHOLD SIZE, INCOME LEVELS, MORTGAGE RATES, AND UNDERWRITING.)



KEY INFORMATION

- Beautiful updated 2 bedroom and 1 bathroom condo
- 784 SF
- Townhome unit in the highly sought after Winter Hill community
- Hardwood floors in living room, dining room, and all bedrooms
- Fully fenced back patio with space for entertaining and relaxing
- Designated off-street parking in the rear and plenty of street parking for guests
- Walking distance to grocery store (Harris Teeter), restaurants, other retail, parks, and other amenities
- Easy access to WFC Metro
- Community pool
- Schools: Thomas Jefferson ES, Mary Ellen Henderson MS, Meridian HS