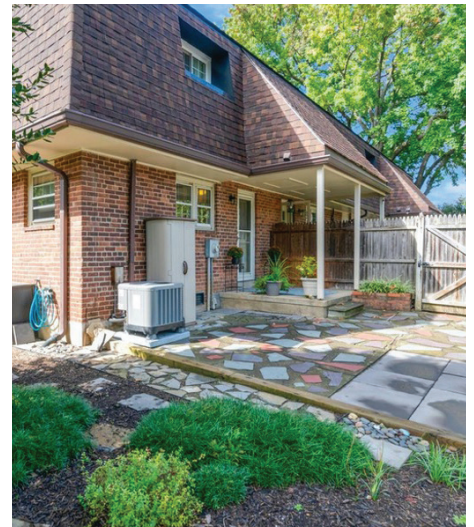
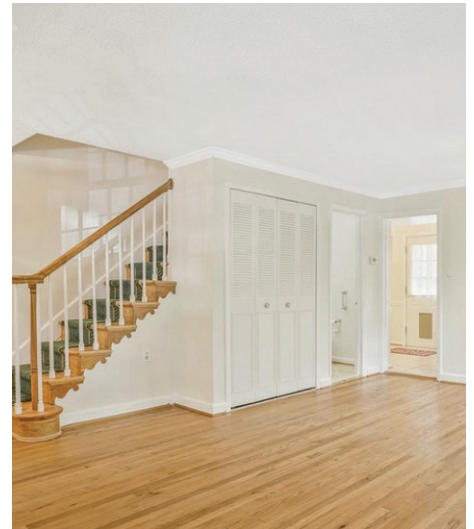


Winter Hill Condominium



402 James Court, Falls Church, VA 22046

Sales Price: Starting at \$480,000 (DEPENDENT ON HOUSEHOLD SIZE, INCOME LEVELS, MORTGAGE RATES, AND UNDERWRITING.)



KEY INFORMATION

- 952 SF
- Beautiful 3 bedroom and 1.5 bathroom condo
- Corner townhome unit in highly sought after Winter Hill community
- Hardwood floors throughout
- Spacious, well-landscaped garden
- Located on a quiet cul-de-sac with a short walk to the community pool
- Designated off-street parking in the rear with direct access to the backyard
- Walking distance to grocery store (Harris Teeter), restaurants, other retail, parks, and various amenities
- Easy access to WFC Metro
- Schools: Thomas Jefferson ES, Mary Ellen Henderson MS, Meridian HS
- HOA fees of \$433 per month